



Fish Trails Omnium Festival
June 7-8, 2008
Whitefish, Montana
Come Celebrate National Trails Day
Criterium, Road Race, Omnium Prizes
Bike Festival



Fish Trails Omnium Race #1 State Championship Criterium Bicycle Race

Presented By Great Northern Cycling Club & Fish Trails



USA Cycling Event Permit #2008-1210

Date- Saturday June 7, 2008

Location- Depot Park in Downtown Whitefish, MT.

Registration opens at 10:00 am in Depot Park on the East side across from the public library.

Category	Start Time	Length	Entry Fee	Prizes
Kids Race + Parade	12:00pm	1 lap	Free	Everyone!
Juniors	1:00pm	35 mins	\$1.00	TBA
Sr. Wm. Cat 4	1:45pm	35 mins	\$20	Cash 1st-3rd
Sr. Wm. Cat 1, 2, + 3	2:30pm	45 mins	\$20	Cash 1st-3rd
Master Men A+B	3:30pm	45 mins	\$20	Cash 1st-3rd
Sr. Men Cat 4+5	4:30pm	45 mins	\$20	Cash 1st-3rd
Sr. Men Cat 1, 2, + 3	5:30pm	60 mins	\$20	Cash 1st-3rd
Awards in the Park	6:45pm			

Promoter reserves right to combine or expand race groupings via racer turnout and staff. All categories scored separately. All proceeds after prizes payout and costs will be donated to Fish Trails in support of pedestrian/bike trail efforts in the Whitefish area

Course Description- Clean, fast course with eight turns! Two more turns than last year. The course is wide, the pavement is buff and the corners are clean.

Prizes- Awards Celebration for all categories will follow the final race. Payout determined by turnout. Preem Lap Prizes in all fields.

Fish Trails Omnium Scoring- Racers will be awarded points according to finishing place. These points will be combined with points scored at the Star Meadows Road Race on Sunday June 7, 2008 for the overall winner in each category. You must start both races to be eligible for Omnium prizes. Omnium awards will be given at the post race Barbeque at Glacier Cycles on Sunday.

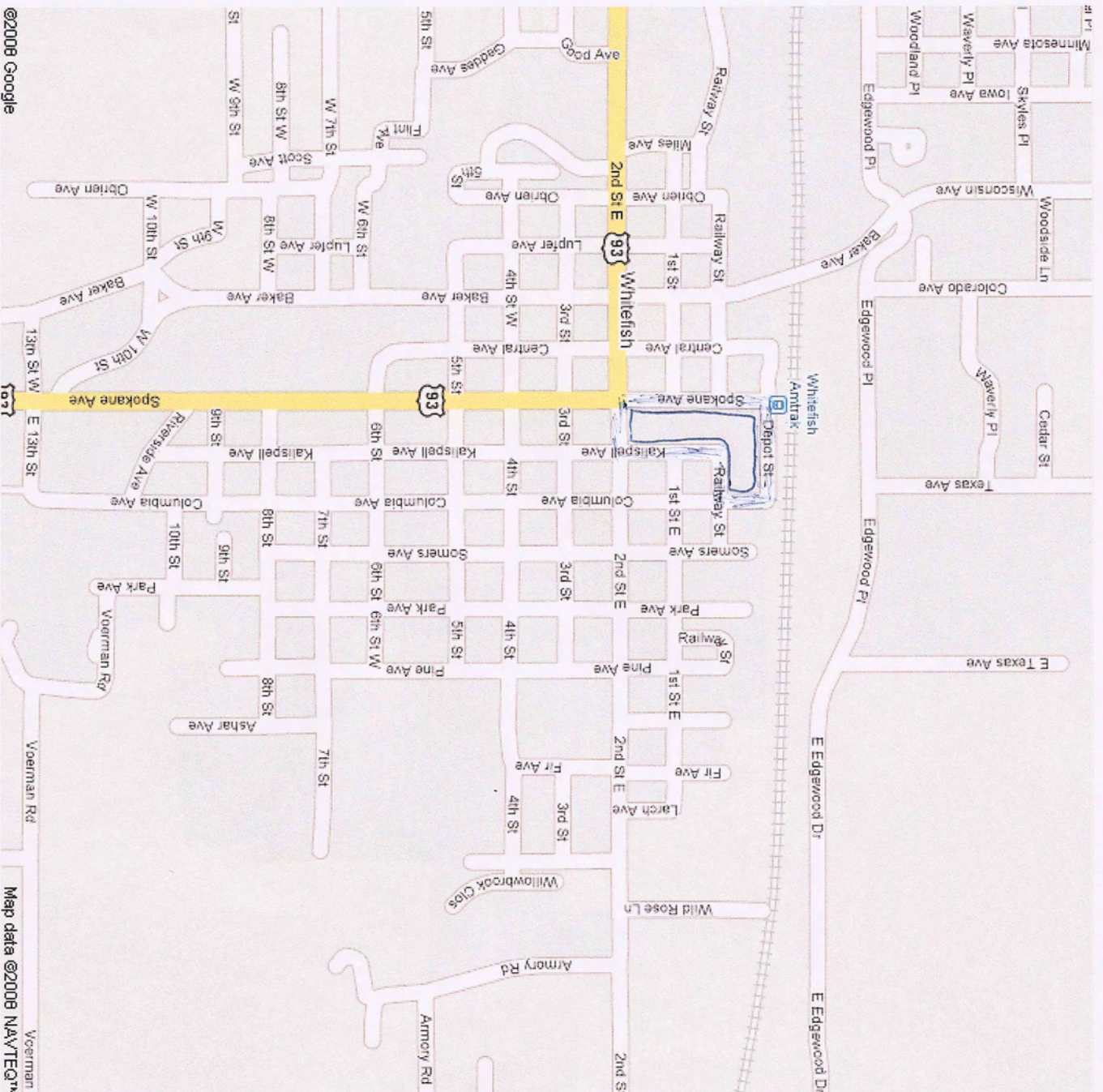
Registration- Pre-register online at https://www.sportsbaseonline.com/Item.aspx?item_id=2553 or on June 6th at Great Northern Cycles 104 O'Brien Ave Whitefish, MT 5:00pm-6:00pm or at the event on June 7th 10am-12pm at the O'Shaughnessy Center

Chief Referee: Don Russell



the daily habit
whitefish.montana





FISH TRAILS
CRIT ROUTE!

NORTH ON SPOKANE AVE
RIGHT ON DEPOT ST
RIGHT ON COLUMBIA AVE
RIGHT ON RAILWAY ST
LEFT ON KALISPELL AVE
RIGHT ON SPOKANE AVE



Star Meadows Road Race/Fish Trails Omnium Race #2 Whitefish, MT

Sunday, June 8, 2008 / Online & Race Day Registration: 9:30-10:30am / Racing begins at 11:00 am

Promoted by Flathead Cycling, Glacier Cyclery and our sponsors. / Held Under USA Cycling Event Permit # 2008-1175 / Montana Women's Series Event / Part of the Fish Trails Omnium with Criterium on Saturday / **Barbeque Awards Fish Trails Celebration following the race downtown Whitefish at Glacier Cyclery**

Course Description: We will be using the same course as last year. There will be 2 sprint primes for the Cat 123 Men's field at the top of the rise at the end of the long straight-away on Lodgepole. There will also be a King and Queen of the Mountain Prime at the top of the "wall" climb up to Star Meadows. All sections are paved. Riders will use the Round Meadows Nordic Center parking lot as staging area and the race will start from there. From the start riders will descend one neutral mile on Star Meadows Road to the intersection with Farm to Market Road. Riders will head south on Farm to Market for 5.5 miles (Women/Juniors pack will turn around on Farm to Market about 3.5 miles from start and will not do the Lodgepole loop) before turning left on Twin Bridges Road looping around the Twin Bridges, Lodgepole, Farm to Market 6.6 mile loop one or more times depending on race category and then proceeding back north on Farm to Market and turning left, up hill past the start area and zone. The race climbs steeply at first and stair steps with steep but not terribly long climbs all the way to the flatlands of the expansive Star Meadows. The race will turn around at the end of the pavement 17 miles from the turn up from Farm to Market. . The finish will be a mile or so up from the start area similar to years past. Expect some potholes and minor breakup. The feed zone will be as riders climb past the Round Meadows parking area. There may be volunteers to help with the feed zone, but please have someone there to guarantee you get a feed.

Overall: The course has something for all riders, sprint primes, KOM. It is not a pure climbers course and should favor all-around riders that can hang with the climbers on the stair-step climb up to Star Meadows, which typically breaks up the field. Center line will be enforced on all sections. Stay right even on unmarked sections of pavement.

Time Schedule:

9:30-10:30 Register/Sign-in Omnium Registered athletes need only to sign in. Racers only doing the SM RR will need to do all the paperwork.

11:00- Men 1/2 & 3 4 laps on Lodgepole Circuit/Primes on Laps 2 and 4/ 70 miles

11:05- Men Masters A/B/C/60+ - 1 lap on Lodgepole Circuit/50 miles

11:10 - Men 4,5 - 1 lap on Lodgepole Circuit /50 miles

11:15 - Women 1/2/3/4, Junior Men & Women - Women/Juniors pack will turn around on Farm to Market about 3.5 miles from start and will not do the Lodgepole loop / 40 miles

Promoter reserves right to combine or expand race groupings via racer turnout and staff. All MBRA categories scored separately.

Directions to Start: From downtown Whitefish proceed on Rt. 93 north for approximately 11.7 miles, then take a left on Farm to Market Road. Follow Farm to Market road for 1.5 miles then take a right turn onto Star Meadows road. Drive up Star Meadows Road .5 miles to the Round Meadow Cross Country ski area on the right.

Fees: \$20 registration fee, discount for online Omnium Registration. USA Cycling annual/one day license required and available at registration. Place numbers on RIGHT side. Juniors race for \$1.

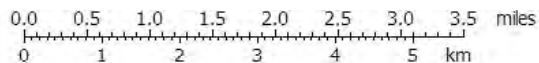
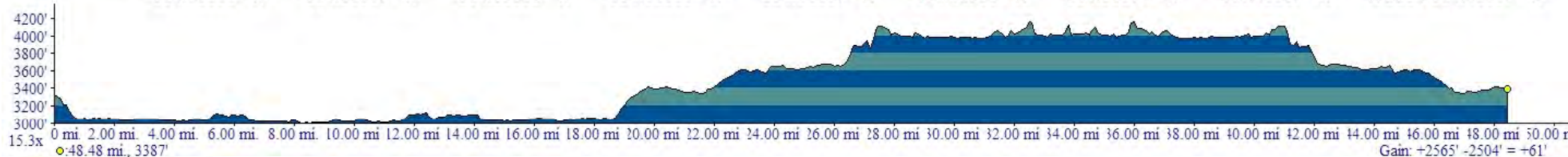
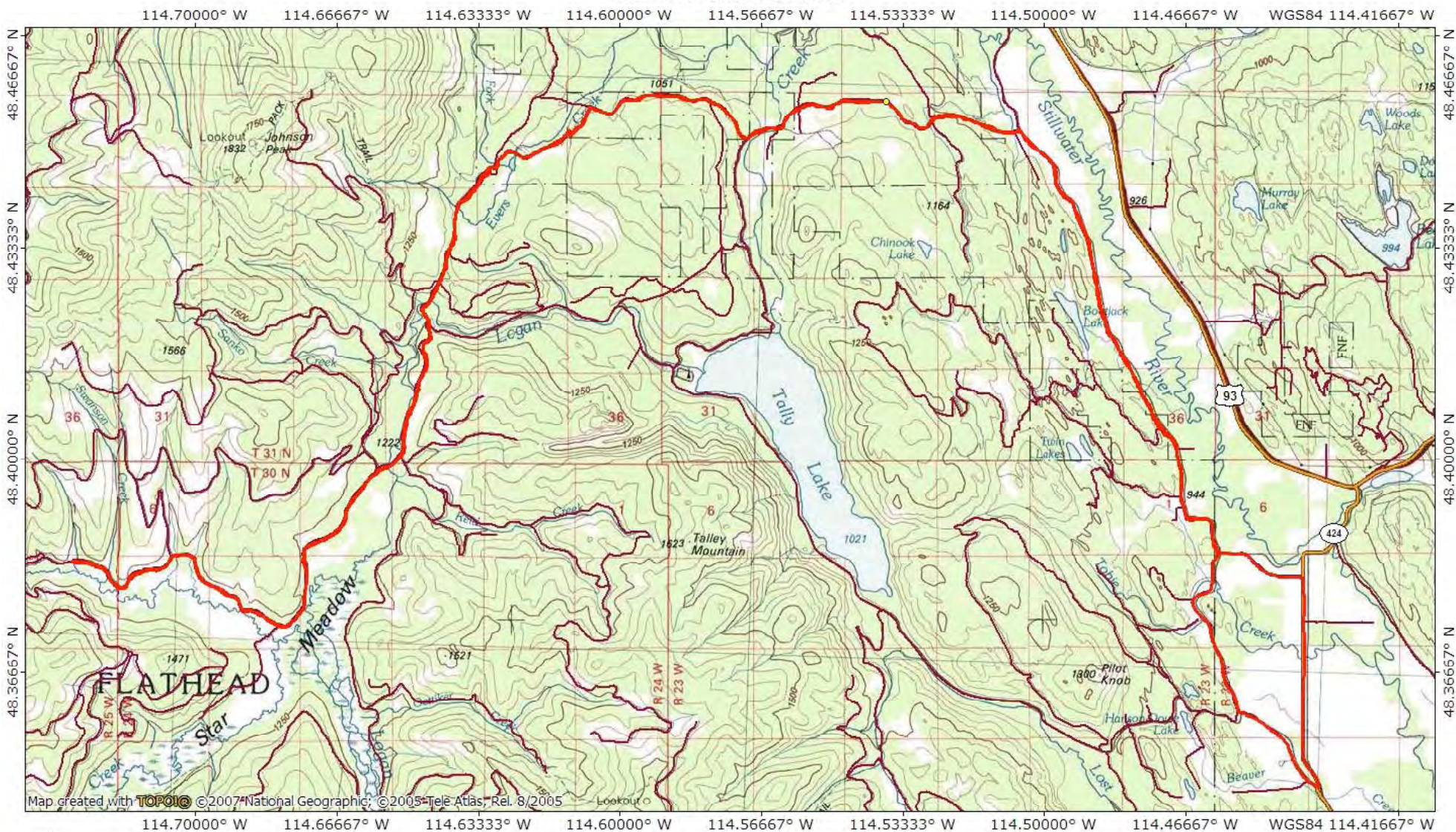
Rules: All USA Cycling rules apply. Helmets are mandatory while warming up AND cooling down. Please make sure your bars are properly capped.

Prizes: Fish Trails Omnium Scoring will be maintained for primarily merchandise prizes based on combined omnium points with the Fish Trails Criterium on June 7, 2008. Combined online registration will be available for both events. You must start both races to be eligible for omnium prizes. Links to online registration will be posted at flatheadcycling.org. Cash payout for road race will be less than \$499. Fish Trails Omnium Awards, Prizes, Drawings, Fun, and barbecue will be held at Glacier Cyclery in Whitefish as soon as practicable after the finish of the race. All proceeds after prizes payout and costs will be donated to Fish Trails in support of pedestrian/bike trail efforts in the Whitefish area. Unclaimed prize money will also be donated.

Contact: Race Director Russ Schneider russschneider@centurytel.net Chief Referee Don Russell coach@bikingcoach.com , Race Official Lee Stanley, Glacier Cyclery.



Star Meadows Road Race



TN* / MN
15°
04/17/08